

WELCOM



RICH BOERNER



ARIEL RAZ

It's the year 2030....

_____ is finally solved.

It's the year 2030....

_____ is the number
one TV show in the USA.

It's the year 2030....

Students in your local community
just won an award for

_____.



**Visit Multiple
Futures**



Build to Think



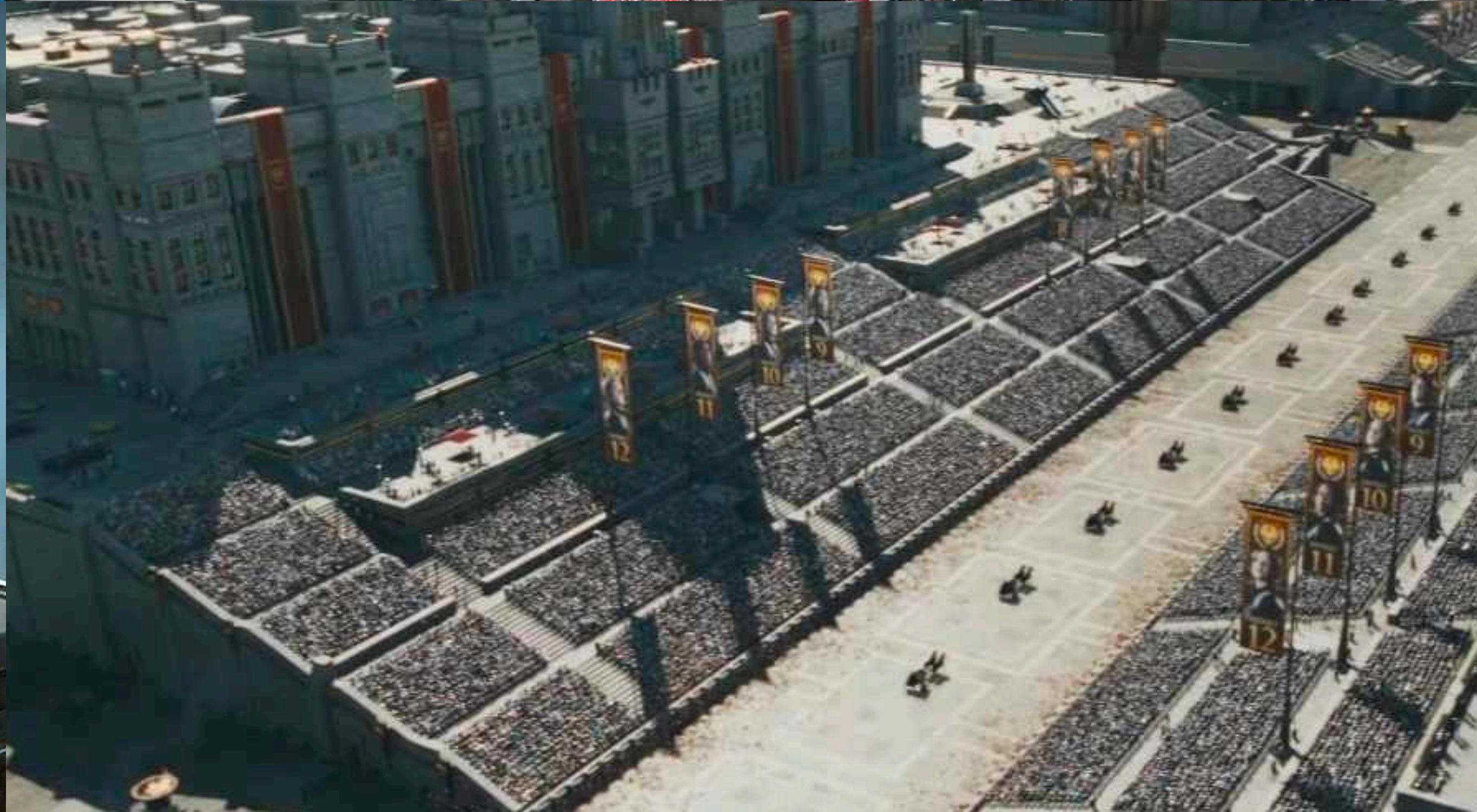
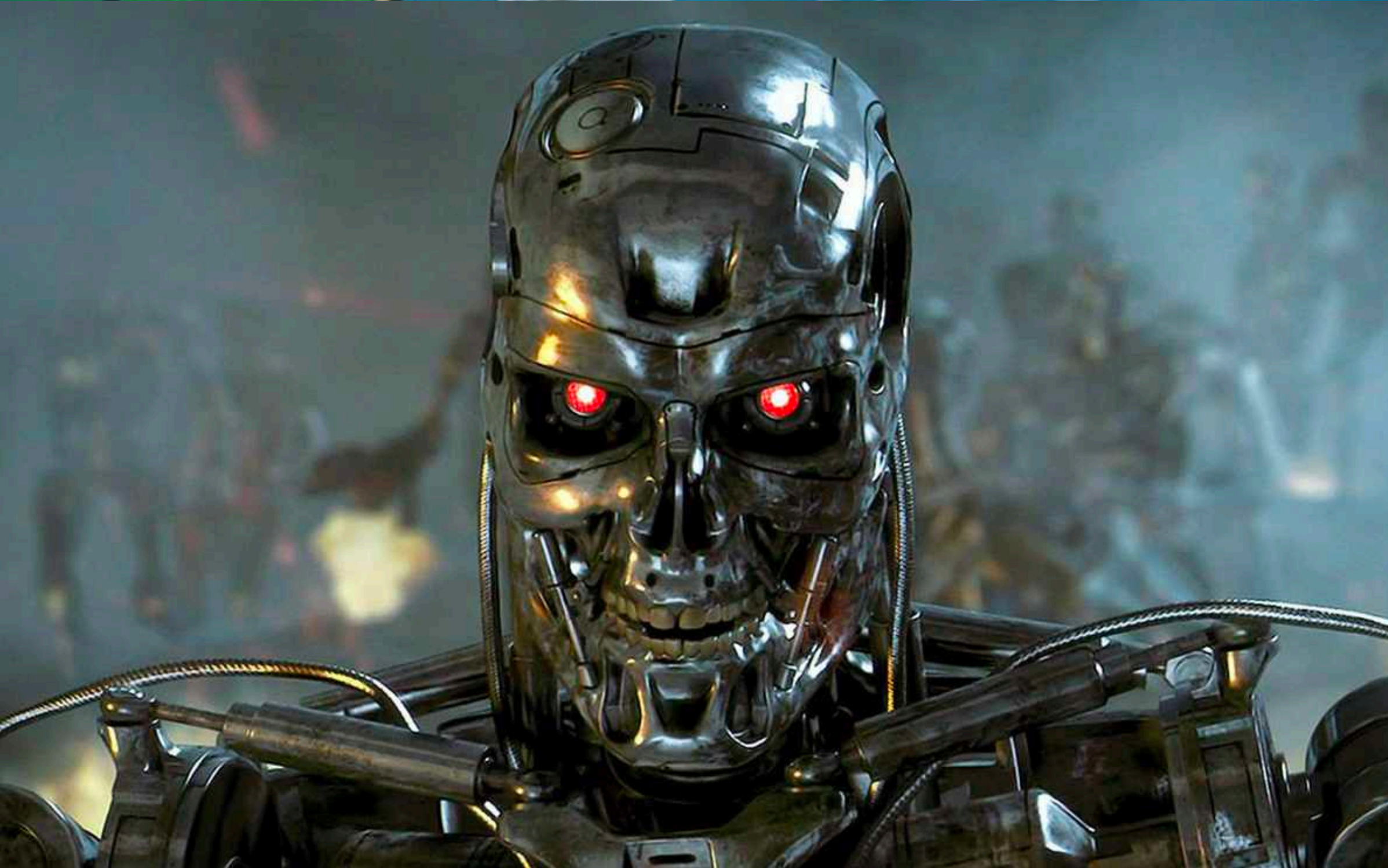
**Bias Towards
Collaboration**

FUTURES + DESIGN

FUTURES: HOW MIGHT THE WORLD CHANGE AND WHY?

DESIGN: WHAT MIGHT PEOPLE NEED IN THOSE FUTURES?

K12 EDUCATION: HOW MIGHT WE SHAPE THE FUTURE?



Setting up

Scenarios

**Duration &
Intensity**

**Depth & Length
Economic Impact**

Shorter Duration



Longer Duration



Slower Recovery

Faster Recovery

Shorter Duration

Constrained

**Growth/Return
To Normal**

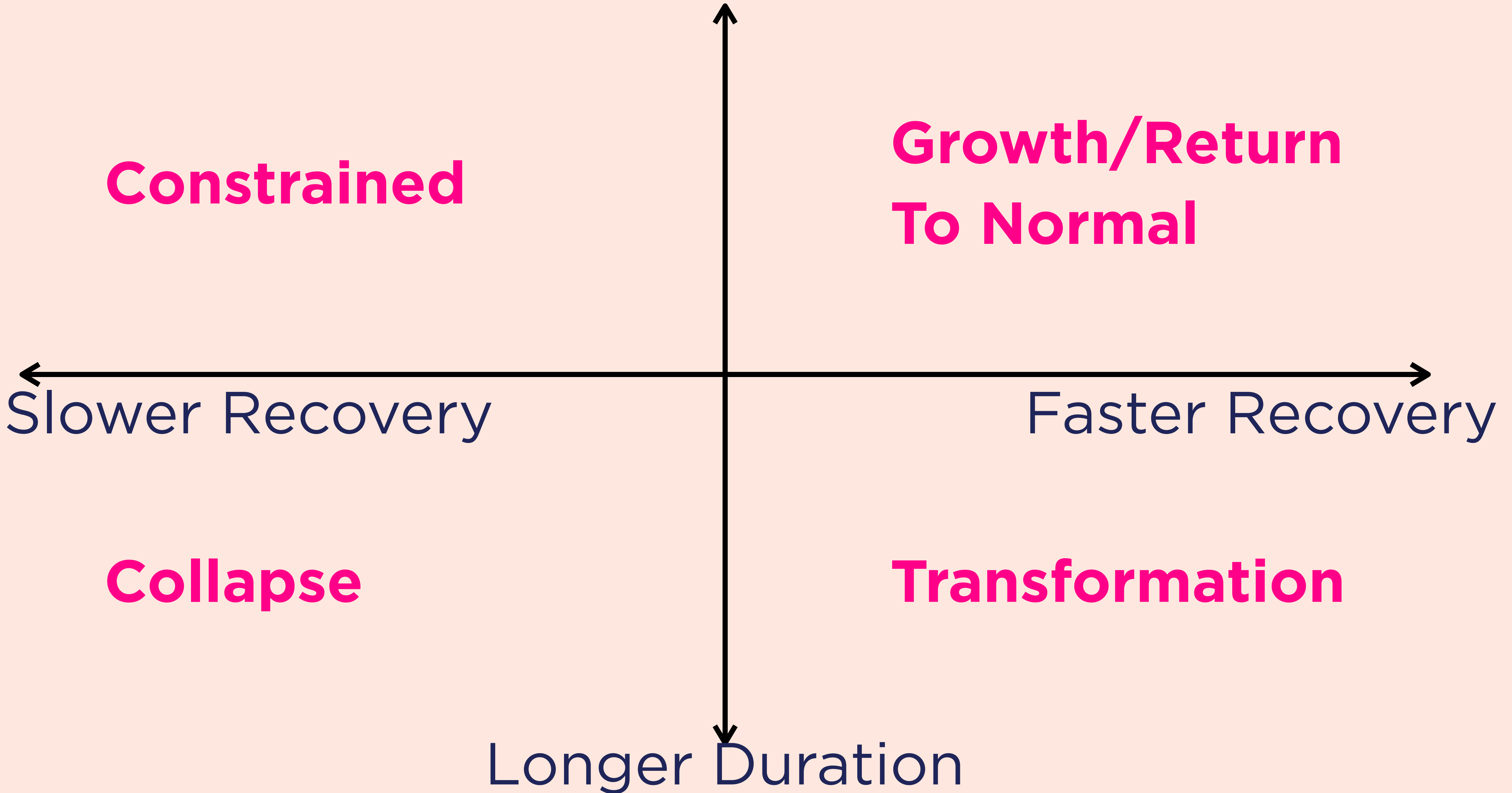
←
Slower Recovery

→
Faster Recovery

Collapse

Transformation

Longer Duration





EAGLES REUNITE:

A PLAN TO REOPEN GRADED'S CAMPUS

GRADED
THE AMERICAN SCHOOL OF SÃO PAULO

We will prioritize student, faculty, and staff health, safety, and well-being over all other objectives:

- By establishing and promoting practices and policies that reduce the risk of viral transmission and enable us to be responsive and agile when facing evolving health circumstances.
- By ensuring hygiene- and health-related policies are research-based, effectively implemented, clearly communicated, and diligently enforced.



REOPENING BY PHASE

Phases will be determined by government regulations and local infection rate, and in adherence to the Brazilian Ministry of Health and the Center for Disease Control and Prevention (CDC) recommendations.



Phase 1: Most restrictive

- Closed campus.
- All students engaged in distance learning.

Phase 2: Moderately restrictive

- Suspension of busing and carpooling.
- Postponement of in-person after-school activities.
- Reduced population density (50% or fewer students on campus.)
- No parent access to campus.
- Essential service providers and deliveries only with health screening.

Phase 3: Less restrictive

- Suspension of busing and carpooling.
- Low-risk in-person after-school activities and/or athletics resume.
- Increased density of population (50% or more students on campus.)
- No parent access to campus.
- Essential service providers and deliveries only with health screening.

Phase 4: Least restrictive

- Busing and carpooling resume.
- Moderate-risk in-person after-school activities and/or athletics resume.
- Full student occupancy.
- Limited parent access permitted.
- Essential service providers and deliveries only with health screening.

Phase 5: No restrictions

- Effective COVID-19 vaccination and/or treatment is readily available.
- Pre-pandemic Graded operations are fully restored.

Futures Questioning @ Graded

How we can mitigate viral spread while teaching children on campus?

How can we design a schedule for learning that can toggle to meet any model of instruction we face?

How can we ensure students have “belonging certainty” in a distance and blended environment?

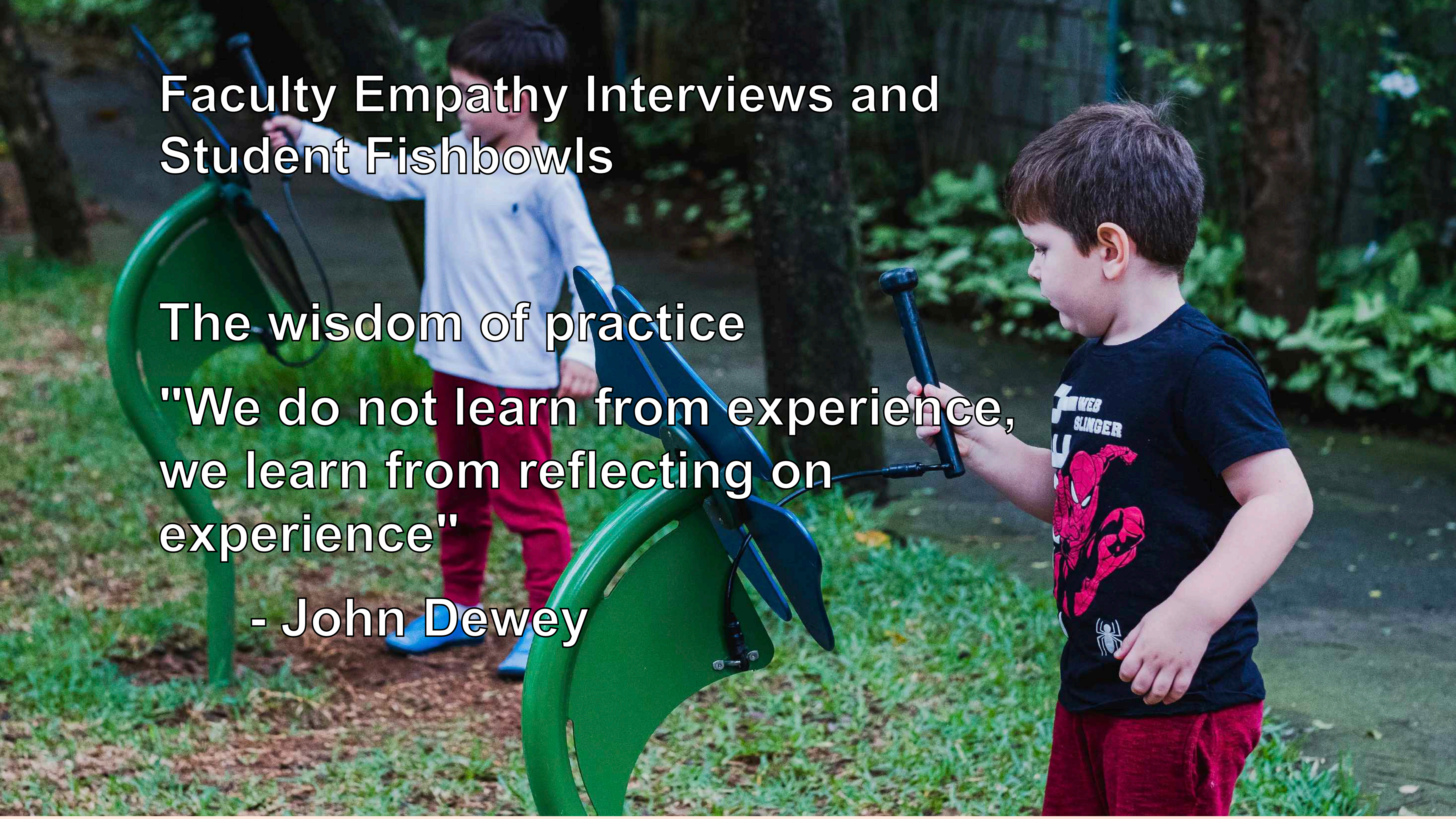


Faculty Empathy Interviews and Student Fishbowls

The wisdom of practice

"We do not learn from experience,
we learn from reflecting on
experience"

- John Dewey



Faculty Futures Thinking

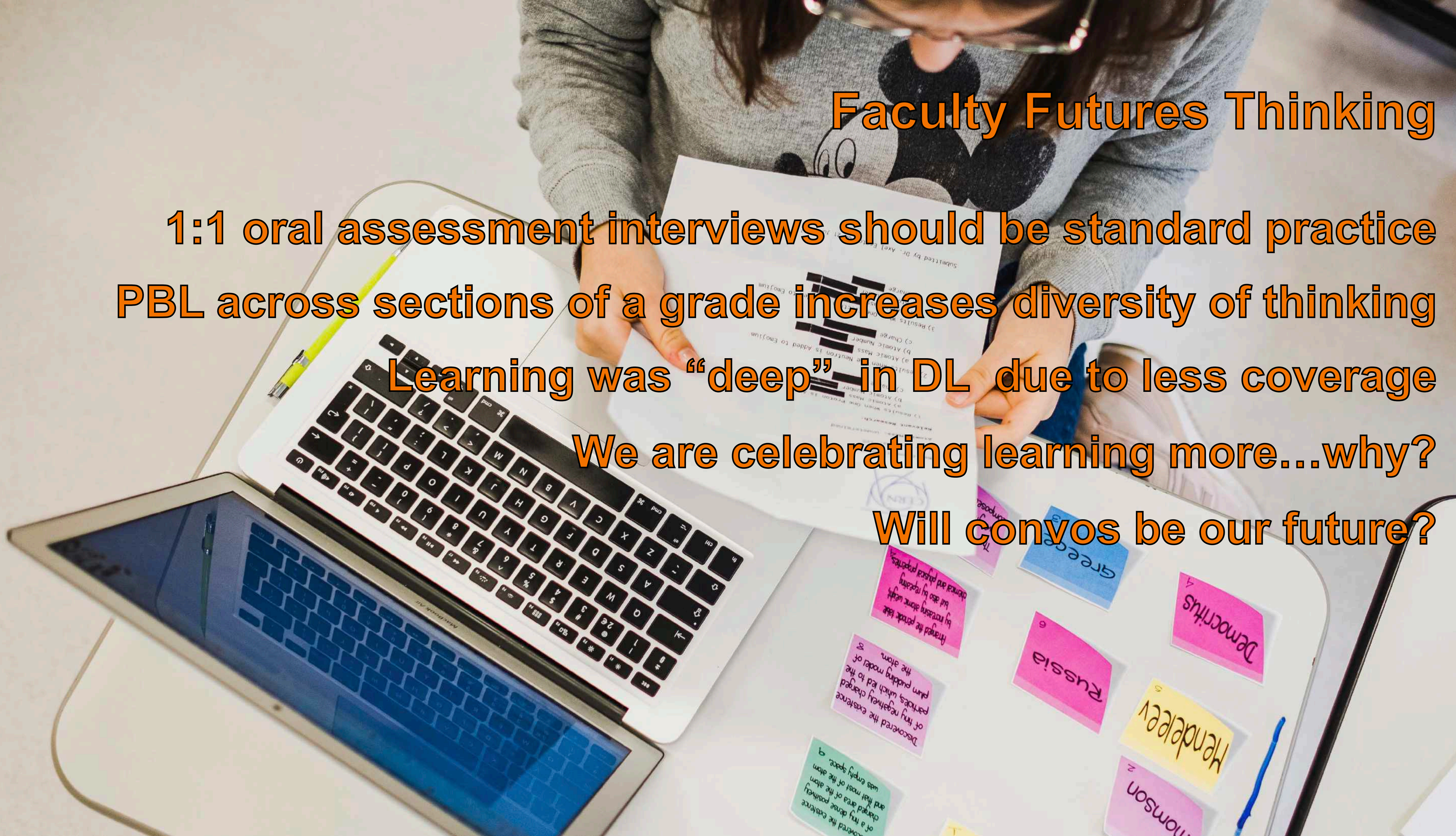
1:1 oral assessment interviews should be standard practice

PBL across sections of a grade increases diversity of thinking

Learning was “deep” in DL due to less coverage

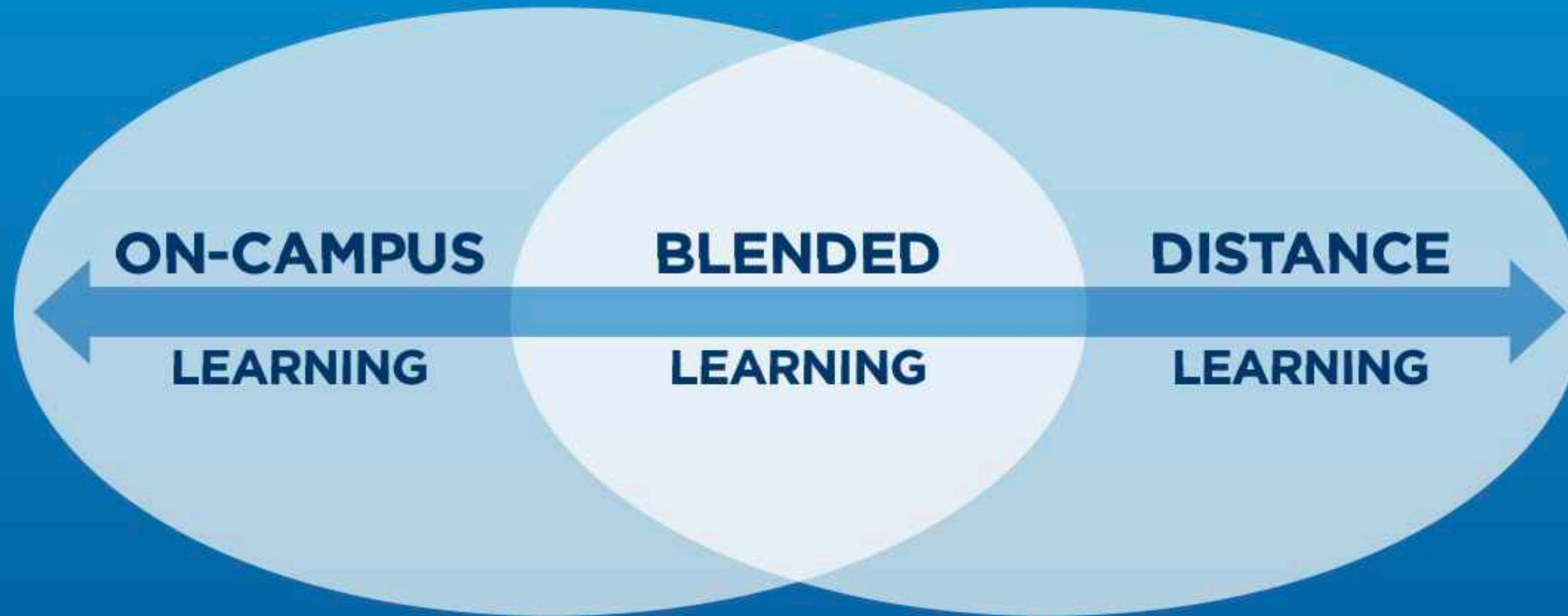
We are celebrating learning more...why?

Will convos be our future?



LEARNING MODES

The mode we employ and/or the ratio of on-campus to distance learning will be determined by current health conditions. This plan will allow us to move fluidly between learning modes without altering a student's class schedule.



BLENDDED LEARNING:

Weekly On-campus Schedule @ 35% occupancy:

Pre-Primary	Every other week (three classes one week, four classes the next)
Grades 1-3	A&C, B&D - Every other week
Grade 4	A&C, B&D - One week every four weeks
Grade 5	A&C, B,D,&E - One week every four weeks
Grade 6	All students - Every other week
Grades 7-10	All students - One week every four weeks
*Grades 11-12	All students - Every other week

**Subject to change as additional scientific research emerges.*

WHAT IS A CONVO?

A convocation or “convo” is a group of Graded eagles.

Why convos?

The creation of convos reduces the number of classmates with whom a student interacts and helps curtail the spread of COVID-19.

Lower School



Convos will consist of approximately 20 homeroom students.

Grades 6-10



Convos will consist of approximately 20 grade-level students.

Grades 11-12



Convos will be made of entire grade levels, since IB course offerings preclude the creation of smaller convos.

ON-CAMPUS LEARNING

- Personalized convos will help mitigate the risk of viral spread.
- Convo members will share one classroom.
- Convo composition will remain consistent.
- Physical distancing will be required within convos.
- Faculty will rotate between classrooms, instead of students.
- Students will not mix with their peers in other convos.
- Science labs, art studios, gymnasiums and innovation spaces will be assigned to specific convos at designated times.
- Outdoor spaces will be assigned to individual convos.

WHAT IS A CONVO?

A convocation or “convo” is a group of eagles

- In Lower School, convos will be comprised of approximately 20 homeroom students.
- In grades 6-10, convos will be comprised of approximately 20 grade-level students.
- In grades 11 and 12, convos will be made of entire grade levels, since IB course offerings preclude the creation of smaller convos.

THANK YOU!

ARIEL@DSCHOOL.STANFORD.EDU